



ES UK ESL-636 Multi-Purpose Low-speed Centrifuge is ideal for the centrifugation of samples in clinical chemistry, cytology, research laboratories, industrial laboratories, etc. This centrifuge is suitable for tubes with caps, blood collection or urine tubes. Swing-out bucket rotors and adapters can be compatible with standard tubes up to 100mL at low speed.

ESL-636 Multi-Purpose Low-speed Centrifuge

Features

- Speed can be set from 300- 6000rpm
- Maximum capacity of the centrifuge: 100 mLx4
- 9 Acceleration/10 Brake speed settings to ensure optimal separation
- A wide range of rotors optional(fixed angle and swing-out bucket rotors)
- Automatic rotor identification
- Timers can be set up to 99 min or HD for continuous running
- Pulse Key for quick spin function
- 9 procedures stored in memory makes the operation much simplified
- Maintenance-free brushless DC motors



Specifications

Speed range	
Max. RCF	
Speed accuracy	
Max. Capacity	
Run Time	
Motor	
Display	
Program Memory	
Safety Devices	
Acceleration/Deceleration	
Power	
Dimension[WxDxH]	
Weight	
Certification	
Advanced features	

ESL-636

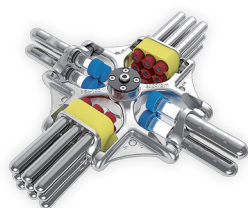
Speed range	300-6000rpm increment:10rpm
Max. RCF	4020xg
Speed accuracy	±20rpm
Max. Capacity	100mLx4
Run Time	30sec-99mins/continuous
Motor	Brushless DC
Display	LCD
Program Memory	9
Safety Devices	Door Imbalance protection Over speed & Over temperature detection
Acceleration/Deceleration	9 ↑ /10 ↓ steps
Power	660W; Single-phase AC220V-240V, 50Hz/60Hz, 6.3A; AC110V-120V,50Hz/60Hz,10A
Dimension[WxDxH]	445x579x269mm
Weight	36kg
Certification	CE
Advanced features	speed/rcf switch; Rotor identification





Uncapping block

for S4-100 rotor



SE4-100(Standard accessory) for ESL-636

Cat. No. ES400041

Max. speed: 4000rpm
Max. RCF: 2950×g
Rotor material: stainless steel body and adapter



A15V

Cat. No. ES500025

15ml conical tube adapter, MOQ 8 Pcs (optional)



19400045



19400044



19400043



19400042

bucket	x 4										
tube	x 36		x 16			x 8	x 4	x 4	x 4	x 8	x 20
Nominal volume	3-7mL		10mL	12mL	15mL	50mL	100mL	85mL	50mL	15mL	3-7mL
φ×L mm	13×75	13×100	16×100	17×105	17×120	29.5×100	38×108	38×104	29.5×100	17×120 13×100 13×75	13×100 13×75
tube											
adapter	with plug					 A50V	 A100P80	 A100P50	 A50V	 A100P15	 A100P10
Package	36					8	4	4	4	8	4
Tubes per rotor	36	36	16	16	16	8	4	4	4	8	20
Radius(cm)	14	16.5	15.9	15.9	15.9	15.9	15.9	15.9	15.9	15.1	14.7
Max RCF (g-force)	2500	2950	2840	2840	2840	2840	2840	2840	2840	2700	2630



**S2-MP**

Cat. No. ES400062

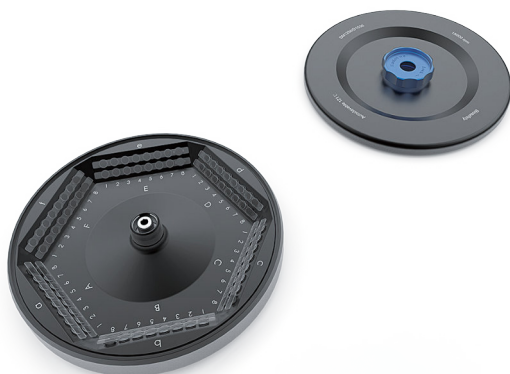
ESL-636

Max. speed: 4000rpm

Max. RCF: 2200×g

Rotor capacity: Micro-plates 384-PCR/96-PCR/Elisa plates×8pcs; Deep well plates×4pcs

Rotor material: stainless steel body and aluminum buckets

**AS12-PCR8**

Cat. No. ES400036

ESL-636

Max. speed: 6000rpm

Max. RCF: 4020×g

Rotor capacity: PCR 8 trips×12

Rotor material: aluminum

Biosealing: Yes

**AS30-2**

Cat. No. ES400034

ESL-636

Max. speed: 6000rpm

Max. RCF: 4020×g

Rotor capacity: 2mL×30

Rotor material: aluminum

Biosealing: Yes

**AS60-2**

Cat. No. ES400037

ESL-636

Max. speed: 6000rpm

Max. RCF: 4020×g

Rotor capacity: 2mL×60

Rotor material: aluminum

Biosealing: Yes



Available rotors



Cat. No. ES400038

AS6-50V (cone bottom)

ESL-636

Max. speed: 6000rpm
 Max. RCF: 4020xg
 Rotor capacity: 50mLx6 or 15mLx6
 Rotor material: aluminum
 Biosealing: Yes



Cat. No. ES400035

AS18-5V (cone bottom)

ESL-636

Max. speed: 6000rpm
 Max. RCF: 4020xg
 Rotor capacity: 5mLx18
 Rotor material: stainless steel body and aluminum buckets
 Biosealing: Yes



Cat. No. ES400039

A8-50 (round bottom)

ESL-636

Max. speed: 5000rpm
 Max. RCF: 3960xg
 Rotor capacity: 50mLx8 or 15mLx16
 Rotor material: aluminum body and stainless steel adapter
 Default adapters: SE100P31x8,SE100P17x6



Cat. No. ES400040

A30-15 (round bottom)

ESL-636

Max. speed: 4500rpm
 Max. RCF: 3210xg
 Rotor capacity: 15mLx30
 Rotor material: aluminum body and stainless steel adapter Bio-safe(Biosealing): Yes
 Default adapters: SE100P17x30

Rotor	Capacity	Hole Diameter (mm)	Hole Depth (mm)	Max. Tube Height (mm)	Max. Speed (rpm)
AS30-2	2mlx30	11.2	39	43	6000
AS60-2	2mlx60	11.2	39	43	6000
AS6-50V	50mlx6	31	87.8	118	6000
AS18-5V	5mlx18	17.5	51	56	6000
A8-50	50mlx8 15mlx16	35	85.8	118	5000
A30-15	15mlx30	17.5	98	123	4500
S2-MP	Micro platex8/ Deep well platex4	-	-	-	4000

